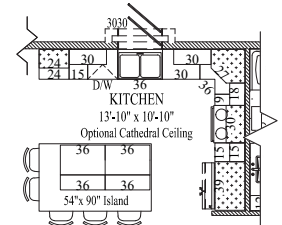
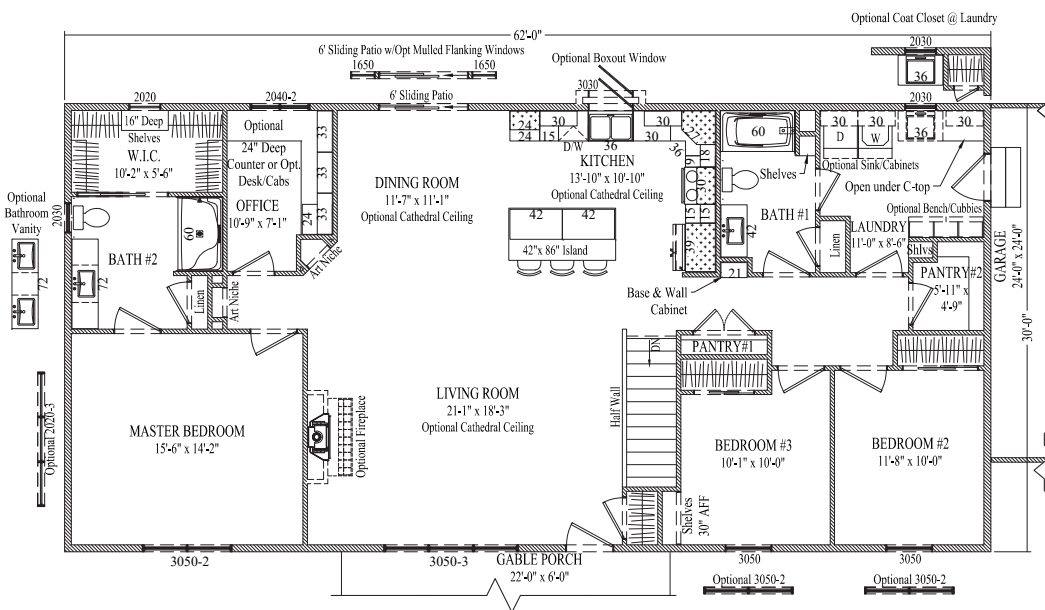




www.wardcraft.com
1-888-WARDCRAFT

3 Bedrooms, 2 Baths, Office Optional 1/2 Bath

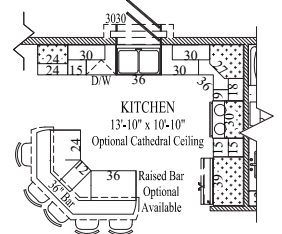
Hanover II



Optional Kitchen Island
Optional 54" x 90" Island Countertop is Square/Wood edged Laminate or Corian

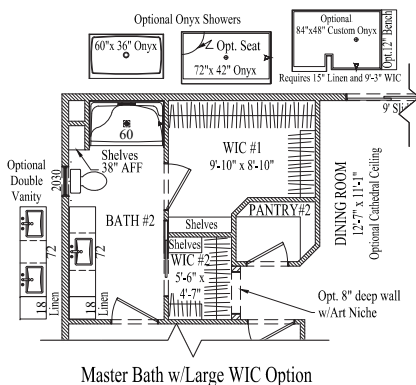
Standard 42" Island Countertop is Double Roll Laminate

95

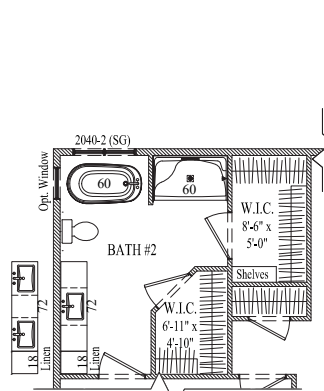


Optional Angled Kitchen Island

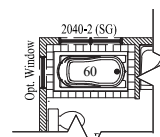
NOTE: Offices between the Hanover and Hanover II are interchangeable.



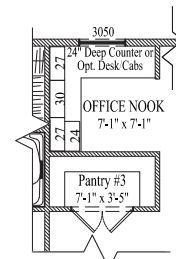
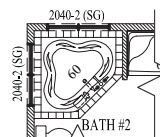
Master Bath w/Large WIC Option



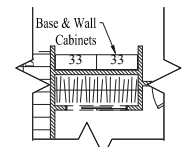
Master Bath w/Freestanding Tub Option



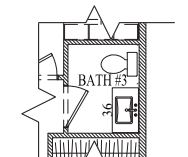
Whirlpool Tile Platform Tub
Options
No Linen w/ Large Whirlpool



Optional Office Nook Off Dining w/Pantry #3 @ Hallway



Optional Base and Wall Cabinets in P/O Pantry #1



Optional 1/2 Bath in place of Pantry #2

Porch style, size, post location, window location & larger garages may have been customized, refer to floorplans for standard placement.

© 2011-2017 Wardcraft Homes

1,860 sq ft